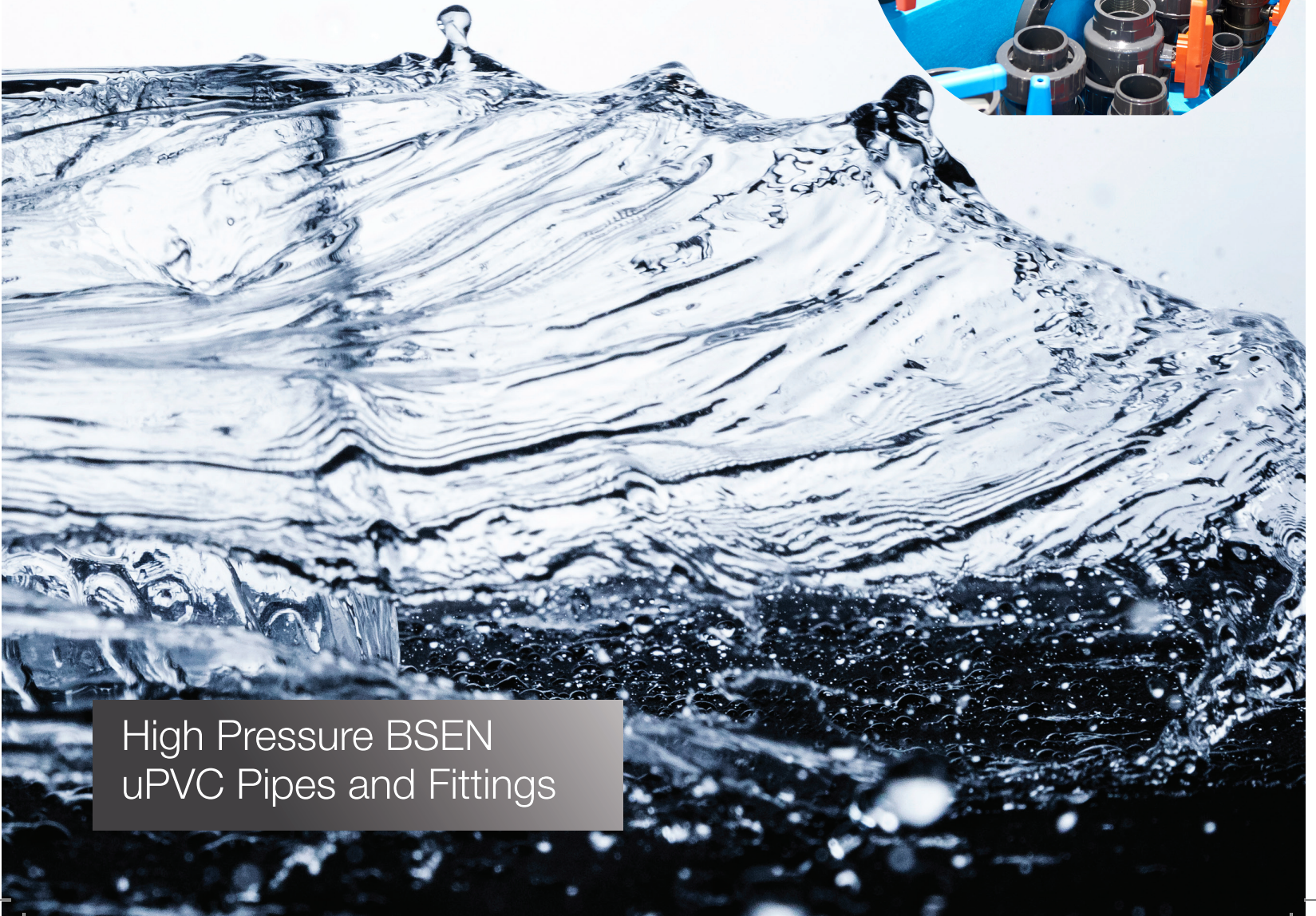
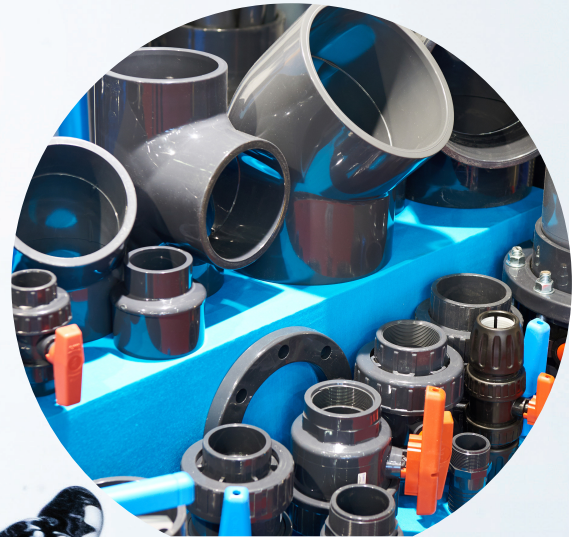




Crafting Excellence.
Inspiring Living



High Pressure BSEN
uPVC Pipes and Fittings



Unplasticized Poly Vinyl Chloride (uPVC) Pipes are made from Combination of poly Vinyl Resin & Additives. These Pipes are Durable, Hard to Damage and Long Lasting and High-pressure sustainable compare to Other Plumbing Pipes. They do not rust over a long Period of time. Therefore, these uPVC High Pressure pipes mostly used for Cold Water application in Plumbing, Water Supply, Underground Drainage and Sewage Line.

Flowplast Lead free uPVC High Pressure Imperial Pipes used in Plumbing System.

Ideal for Cold water Pipes Line in Individual homes, Buildings, Industries and residential uPVC complexes. High Pressure uPVC Pipes possess a High Limiting Oxygen Index (LOI) of 45 and

hence, do not support spontaneous combustion.

Flowplast uPVC Pipes are Self-extinguish-ing, Light in Weight, Cost-effective in Installation and Maintenance. **Flowplast** High Pressure Pipes & Fittings are Lead free and non-Toxic, ideal for Drinking Water, Technically Superior. Cost Effective and ensure uninterrupted water Flow from overhead water tank or underground water tank to Toilet Blocks, Kitchen or to any other utility.

Flowplast High Pressure uPVC Pipes & Fittings in Plumbing System can be used in sunlight, Exposed conditions as pipes and fittings are UV stabilized (Standard grade of Exterior latex Paint (water Based) recommends to protect the plumbing system in good Condition.

Flowplast High Pressure uPVC Pipes & Fittings having good Chemical and Corrosion resistance, low thermal Conductivity, High Strength to Weight ratio, good impact resistance and easy of Installation.

Flowplast High Pressure uPVC Pipes made in the three types Working Pressure PN 9, PN 12 & PN 15 and, High Flow High Pressure Fittings made in Working Pressure PN 15. Jointing of **Flowplast** High Pressure UPVC Pipes & Fittings are simple Method, by using one Step Solvent Cement. Jointing is accomplished quickly and efficiently utilizing only solvent Cement, Cutter or Cham-phering Tool, Reducing Man Power and installation Cost.

BSEN PIPES

PN 9, PN 12 & PN 15 from 1" to 4" Asper BS EN1452-2

BSEN FITTINGS

PN 15 Class -E from 1" to 4" as per BS EN 1452-3:2009

SOLVENT CEMENTS

59ML Tube & 118ML, 237ML, 473ML, 946ML Canes

Pipes & Fittings Made from uPVC compound are clearly marked with Manufacturers Trade Marks Material Designation and applicable BSEN Standards.

QUALITY CONTROL PROCEDURE BEFORE DISPATCH

Total Quality Checks are routine Procedure at Flowplast Testing SOP as Per BSEN Standards and Extra Test as per Flowplast Routine Test, before Dispatching to Market.

PIPES:

Visual Appearance, Density Test for Raw Material, Opacity Test, Hydrostatic Pressure Test at 23° C, Fracture Toughness Test, Gelation Test, Impact Test. Quality Checks are Performed Batch-wise and randomly.

FITTINGS:

Visual Appearance, Burst Pressure Test, Opacity Test, Density Test, stress Relief Test, Resistance to Sulfuric Acid. Quality Checks are Performed Batch-wise and randomly.

FEATURES



Strong & Light Weight



Easy & Leak Proof Joints



Fire Resistance



Good Insulator



Chemical Inertness



Lead Free, Nontoxic



High Impact Strength



High Toughness Strength



UV Stabilized



Maximum Flow, Due To Less Friction



High Pressure Bearing Capacity



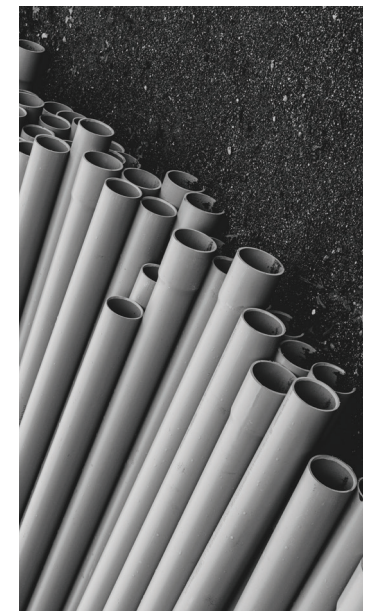
Service Life More Than 50 Years



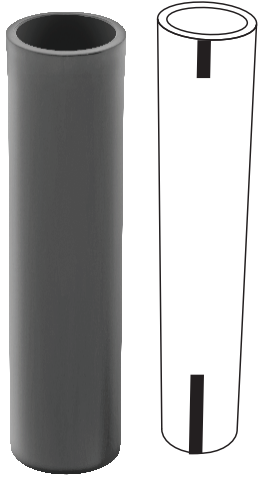
Safe Potable Water



Easy Installation



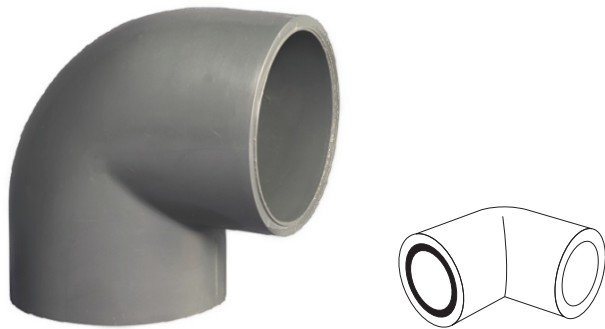
Technical Specification of uPVC BSEN Pipes as per BSEN 1452-2



Nominal Size	Mean outside diameter		Nominal wall thickness (mm) as per relative working pressure					
			Working pressure PN9		Working pressure PN12		Working pressure PN15	
Inch	Min	Max	Min	Max	Min	Max	Min	Max
½"	21.2	21.5	-	-	-	-	1.7	2.1
¾"	26.6	26.9	-	-	-	-	1.9	2.5
1"	33.4	33.7	-	-	-	-	2.2	2.8
1¼"	42.1	42.4	-	-	2.2	2.7	2.7	3.3
1½"	48.1	48.4	-	-	2.5	3.0	3.1	3.7
2"	60.2	60.5	2.5	3.0	3.1	3.7	3.9	4.5
3"	88.7	89.1	3.5	4.1	4.6	5.3	5.7	6.6
4"	114.1	114.5	4.5	5.2	6.0	6.9	7.3	8.4

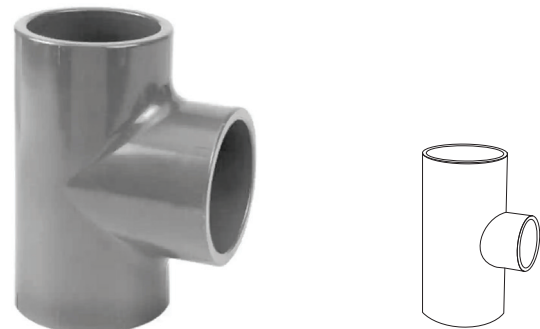
uPVC BSEN High Pressure Fittings (BS EN 1452-3 Class- E PN 15)

ELBow 90° Plain



Size	ID	SL
½"	21.3	16.5
¾"	26.7	19.5
1"	33.5	22.5
1¼"	48.2	30.0
2"	60.2	36.0
3"	88.8	50.5
4"	114.2	63.0

Tee 90° Plain



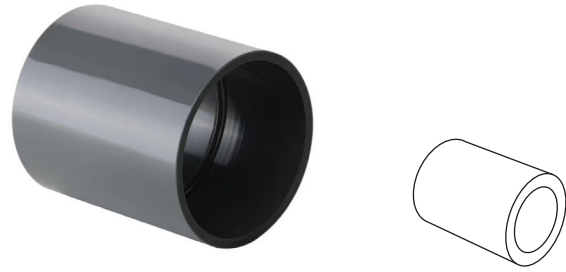
Size	ID	SL
½"	21.3	16.5
¾"	26.7	19.5
1"	33.5	22.5
1¼"	48.2	30.0
2"	60.3	36.0
3"	88.8	50.5
4"	114.2	63.0

ELBow 45° Plain



Size	ID	SL
1/2"	21.3	16.5
3/4"	26.7	19.5
1"	33.5	22.5
1 1/4"	48.2	30.0
2"	60.3	36.0
3"	88.8	50.5
4"	114.2	63.0

Socket (Coupler)



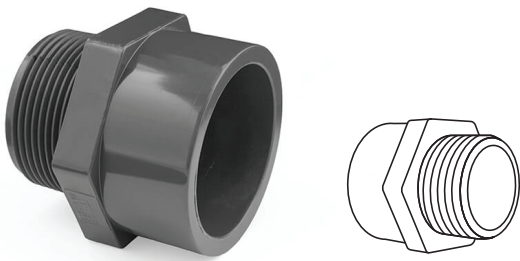
Size	ID	SL
1/2"	21.3	16.5
3/4"	26.7	19.5
1"	33.5	22.5
1 1/4"	48.2	30.0
2"	60.3	36.0
3"	88.8	50.5
4"	114.2	63.0





Male Thread Adapter
(BSP male thread/plain socket)

Female Thread Adapter
(BSP male thread/plain socket)



Size	ID	SL
1/2"	21.3	16.5
3/4"	26.7	19.5
1"	33.5	22.5
1 1/4"	48.2	30.0
2"	60.3	36.0
3"	88.8	50.5
4"	114.2	63.0

Size	ID	SL
1/2"	21.3	16.5
3/4"	26.7	19.5
1"	33.5	22.5
1 1/4"	48.2	30.0
2"	60.3	36.0
3"	88.8	50.5
4"	114.2	63.0

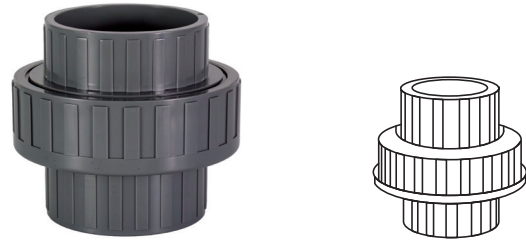
uPVC BSEN High Pressure Fittings (BS EN 1452-3 Class-EPN 15)

Brass Union (Brass male insert BST thread/socket type)



Size	ID	SL
1/2"	21.3	16.5
3/4"	26.7	19.5
1"	33.5	22.5
1 1/4"	48.2	30.0
2"	60.3	36.0
3"	88.8	50.5
4"	114.2	63.0

Union Socket Type



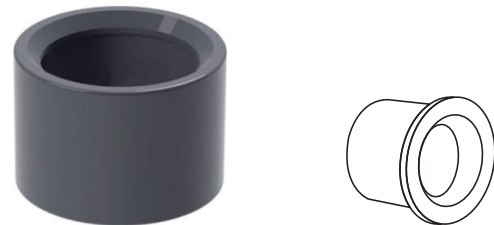
Size	ID	SL
1/2"	21.3	16.5
3/4"	26.7	19.5
1"	33.5	22.5
1 1/4"	48.2	30.0
2"	60.3	36.0
3"	88.8	50.5
4"	114.2	63.0

Reduce Threaded Tee (BSP Thread/Socket Type)



Size	ID	SL
3/4" x 1/2"	26.7	19.5
1" x 1/2"	33.5	22.5
1" x 3/4"	33.5	22.5

Reducing Bush (Spigot / Socket Type)



Size	OD	ID	SL
3/4" x 1/2"	26.6	21.3	16.5
1" x 1/2"	33.4	21.3	16.5
1" x 3/4"	33.4	26.7	19.5
1 1/2" x 1"	48.1	33.5	22.5
2" x 3/4"	60.2	26.7	19.5
2" x 1"	60.2	33.5	22.5
2" x 1 1/2"	60.2	48.2	30.0



Plot No. 392, Sector-3, AKVN Pithampur,
Madhya Pradesh, India
E-mail: info@flowplastuae.com

Promoted By :
Dave Pools Sanitary Ware Tr Co. LLC,
Dubai, UAE

Authorised Dealer :

0E/FP-BSEN/LT/000/1124



Pipes : BSEN 1452-2
Fittings : BSEN 1452-3 (Class E PN 15)

